



REACH & ARBO-RI&E chemische stoffen

Doublures?
Toegevoegde waarde?
Einde vd chemische Arbeidshygiene?

Theo Scheffers

Royal Haskoning, Chemicals Management Group

Agenda



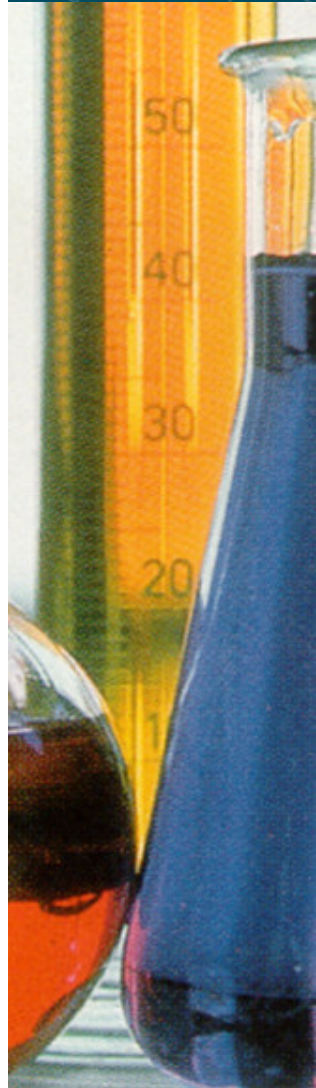
Royal Haskoning (1)



REACH (4)



IH Exposure Scenarios (6)

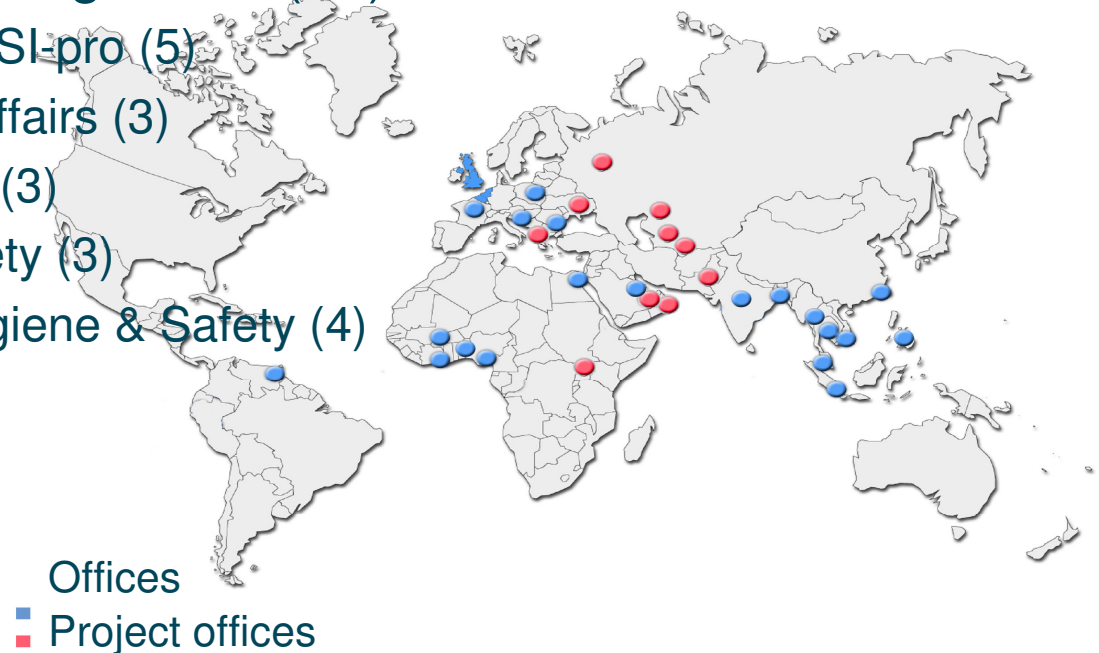


thinking in
all dimensions

Royal Haskoning: Profile



- established in 1881
- independent and professional
- a worldwide network of knowledge, offices and clients
- 3,000 professionals (architects & engineers)
- Environment (150)
- Chemicals Management (20)
 - Database EaSI-pro (5)
 - Regulatory Affairs (3)
 - Environment (3)
 - External Safety (3)
 - Industrial Hygiene & Safety (4)



thinking in
all dimensions

Agenda



Royal Haskoning (1)



REACH (4)



IH Exposure Scenarios (6)

The aim of REACh

- EU chemical industry must:
 - manage chemicals risks and
 - produce and provide users in the supply chain adequate “Instruction leaflets” for all (30.000) chemicals produced or imported over 1 ton/year.
- Restriction & authorization (POP, WBP, CRM, PBT, vBvP)

The core of REACh:

- Exposure Scenarios
- Risk Characterization



EU treaty & Quality of life



ROYAL HASKONING

Product safety VI.95

Environmental Compartments:
Workers protection: XI 137
Community health XIII.152
Environment XIX.174 ev

thinking in
all dimensions



EU wetgeving per produkt & per compartiment

			Produkten VI.95
			Machines (geluid, trillingen, ergonomie etc.)
			Biocides, Voedsel, Geneesmiddelen
Compartimenten	Milieu XIX.174 ev	Volksgezondheid XIII.152	Chemische stoffen (REACH)/ Arbeidplaats XI 137

Overlap REACh & Arbo chemie?

- 
- Ja
 - Vanaf 2011:
SDS stoffen (GHS) + Exposure Scenarios
 - Nee:
 - Tot 2019,
 - Voor < 10 t/y stoffen
 - Legio Uitzonderingen (Polymeren, intermediates, Naturals, R&D, unintentionals [KBR&Rotten], food, cosmetics, biocides etc.)
 - OEL=DNEL + wetenschappelijke weging
 - Combinaties

Prepare for REACH



ROYAL HASKONING



thinking in
all dimensions

1. Substances ?
2. Producer, importer or downstream user ?
3. Preregistration (2008)
4. Consortia
5. Exposure scenarios (haz & >10 t/y per m/i)
 - Use & risk management measures
 - DNEL/PNEC
 - Risk characterization & Compliance
6. Chemical Safety Report & SDS

Agenda



Introduction Royal Haskoning (1)



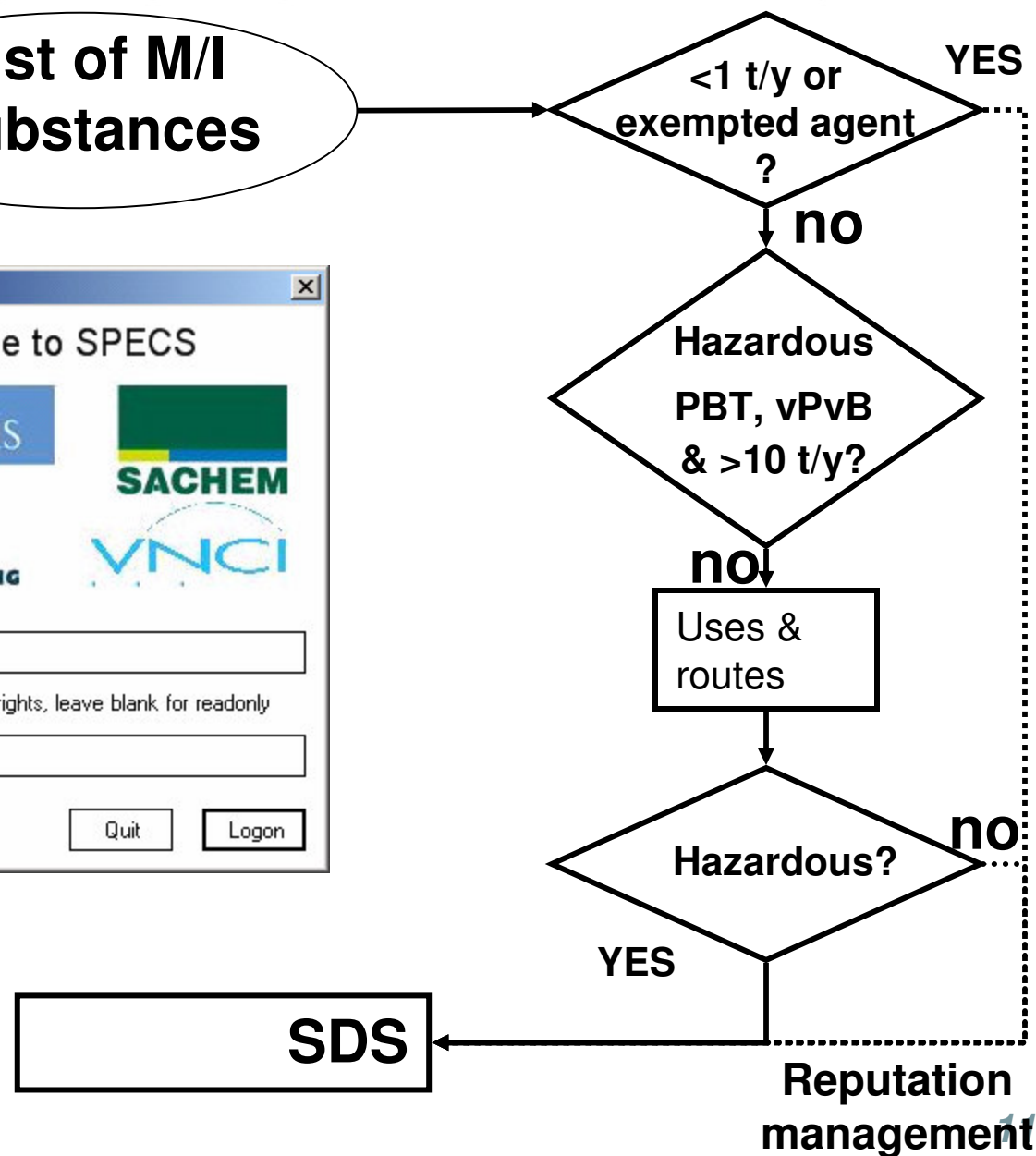
REACH (4)



IH Exposure Scenarios (6)

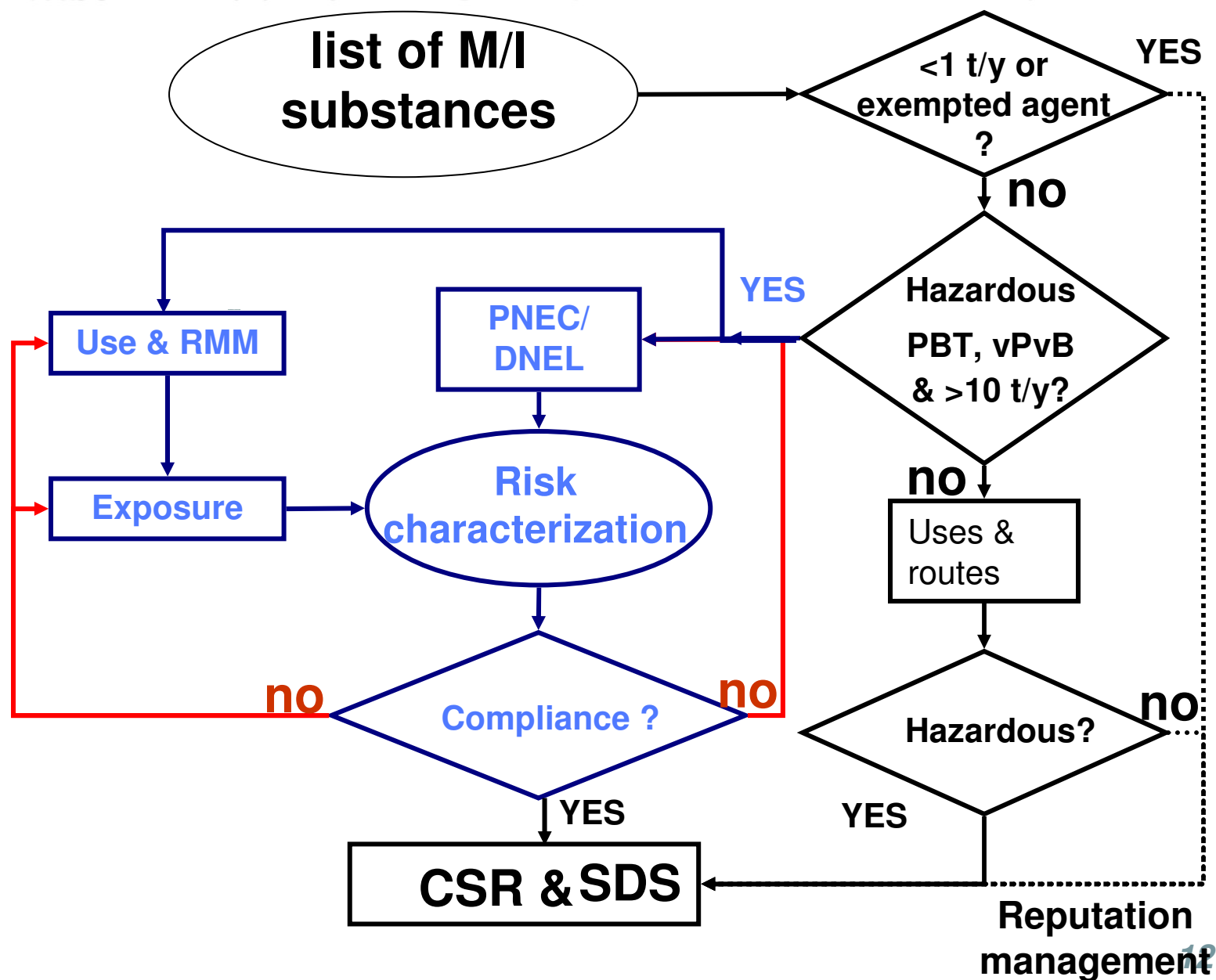
Non exposure scenario agents

list of M/I
substances



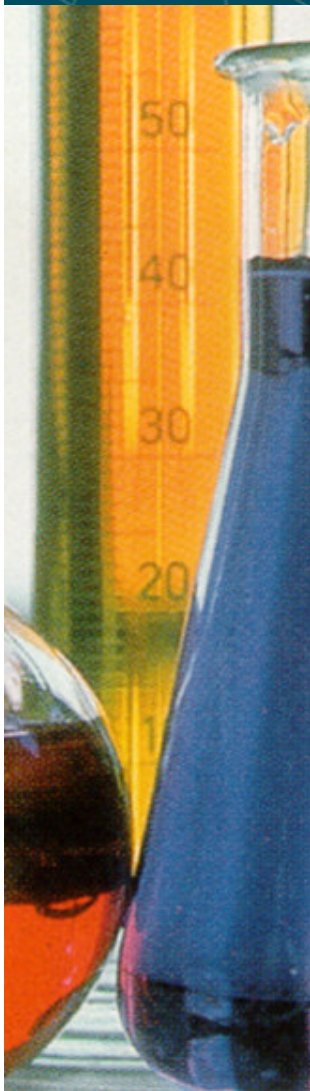
thinking in
all dimensions

Exposure scenarios & Risk Characterisation



thinking in
all dimensions

Exposure Scenario. What is it?



- The manufacturer/importer's description of:
 - manufacturing and intended use downstream
 - the life-cycle
 - Control of exposure of humans & environment

Exposure Scenario approaches



ROYAL HASKONING

- By substance
- By a categories of substances (similarities)
- By a product (eg paint)



thinking in
all dimensions



Exposure Assessment can include:

- Worker protection legislation based info (RI&E)
- Exposure databases (100.000 NL measurements)
- Health Hazard Surveys
- Exposure based occupational cohort studies.
- Ease/Coshh based “one substance” modelling:
 - Eusis (REACH version)
 - Ecetoc Tiered Risk Assessment
 - CEMAS
 - Stoffenmanager.eu
- TRGS440 ordering of substances in categories or products
 - DOHSBase Compare





Non “good industrial hygiene practice” based Exposure Scenarios:

- Real time exposure data inferior to simple conservative modelling
- Hazard overestimation (DNEL assessment factors)

Risk Characterization ->100% non-compliance

- A Bureaucratic exercise
- Invalid for worker protection

Reason to follow REACH Exposure Scenarios developments carefully

Thank you !

t.scheffers@royalhaskoning.com



Offices

■ Project offices

thinking in
all dimensions