



prEN-689: The Flow Chart

Jan Twisk

Industrial Hygiene Technology Leader, Dow Industrial Hygiene Expertise Center.
Chairman of CEFIC Occupational Health Issues Team.



Dow.com

NVvA Symposium, 13 April 2016

Delivering on our Promises

Flow Chart of prEN 689

- Key features of the Flow Chart
 - Simple
 - “To the point”
 - Flexible
 - Cost-effective
- Comparison with other flow charts
 - BOHS-NVvA
 - AIHA

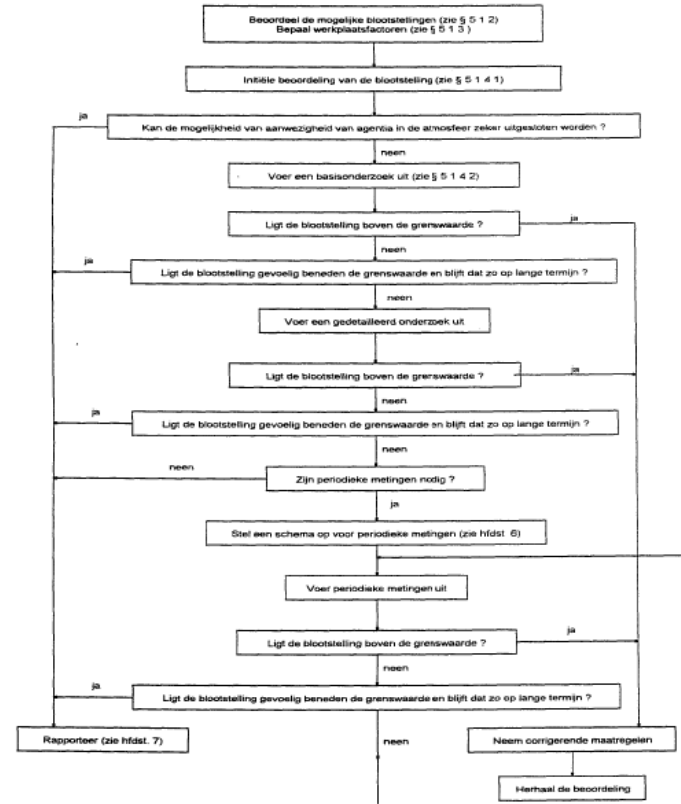
Kept simple: No inclusion of detail and paragraph references

prEN-689



Figure 1—Schematic overview of the strategy

EN-689:1995



Delivering on our Promises

Kept “To the Point”

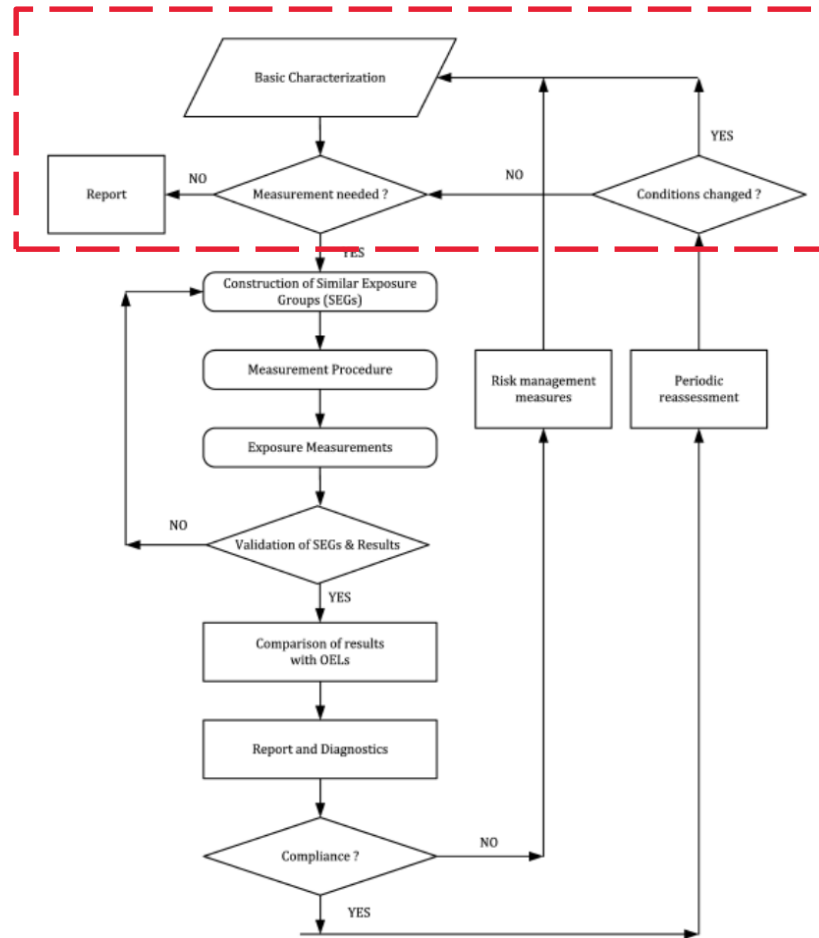
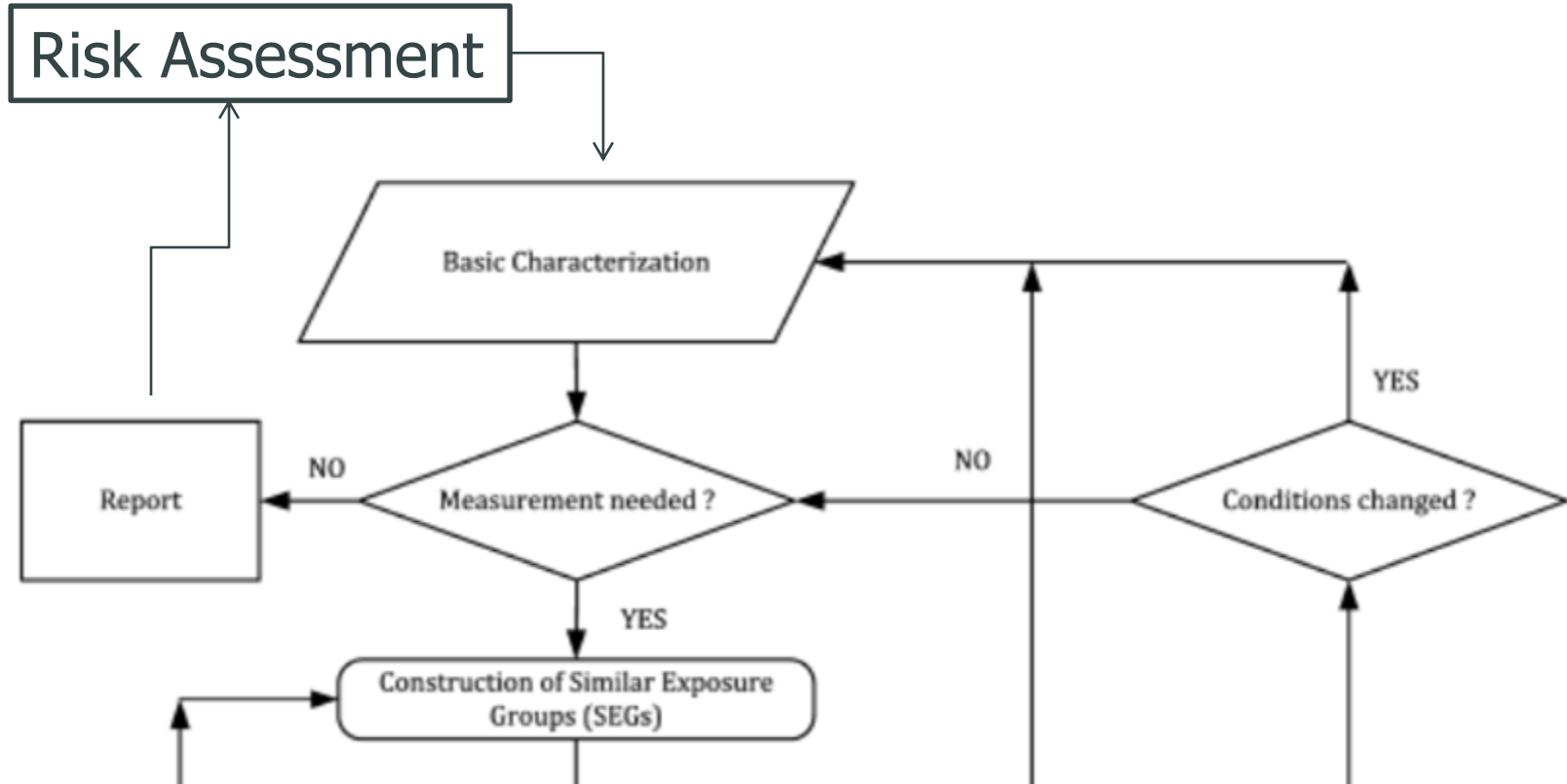


Figure 1 —Schematic overview of the strategy

Kept “to the point”: No inclusion of Risk Assessment loop



Kept Flexible

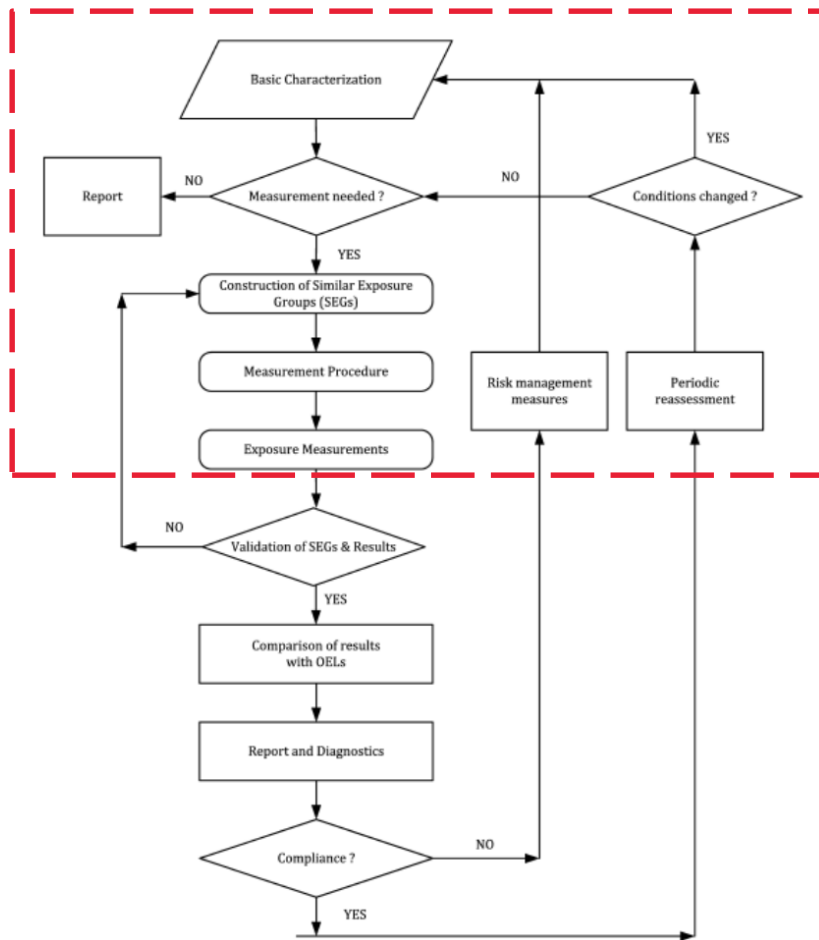
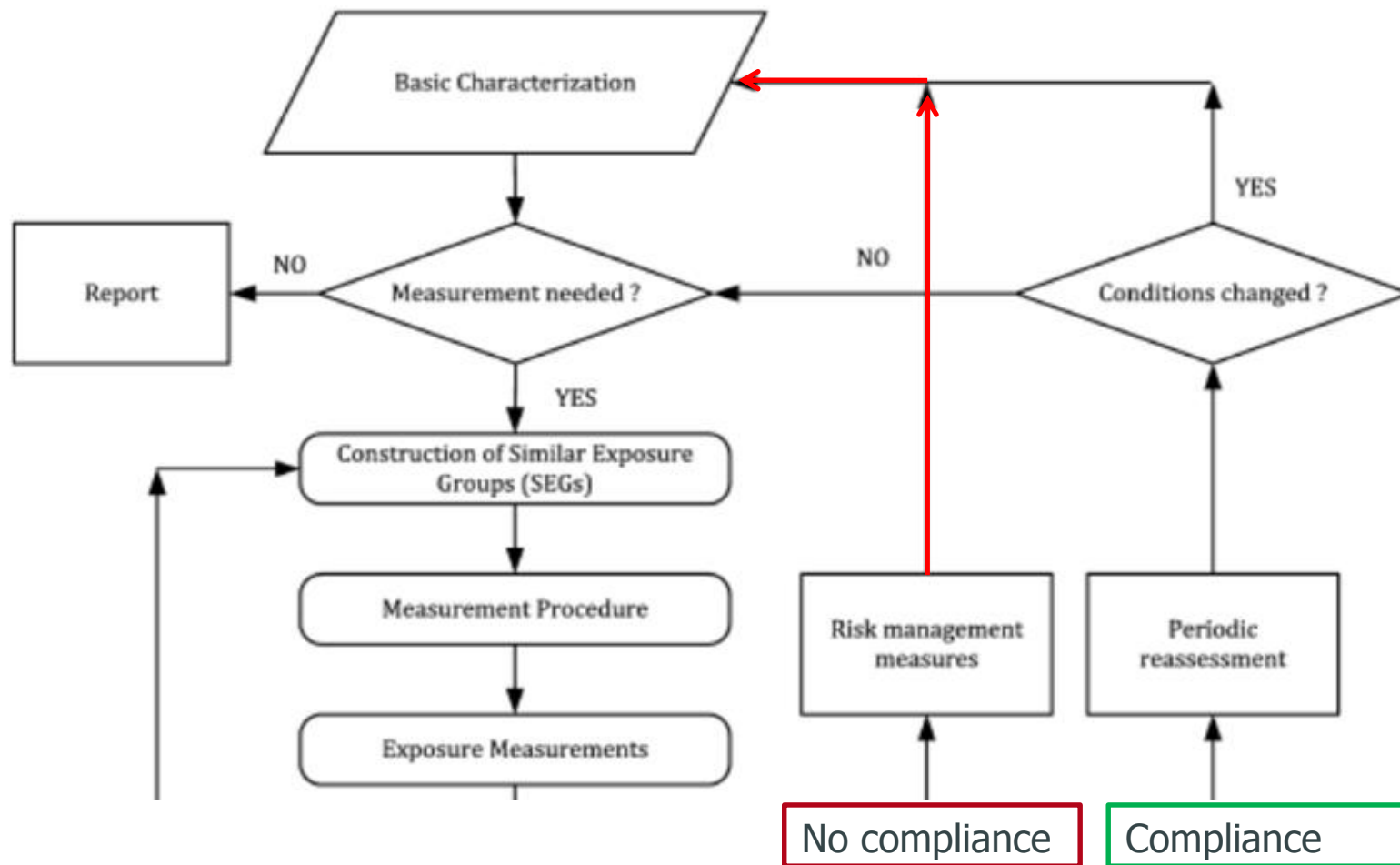


Figure 1 — Schematic overview of the strategy

Kept flexible: Return to Basic Characterization after intro of RMM's

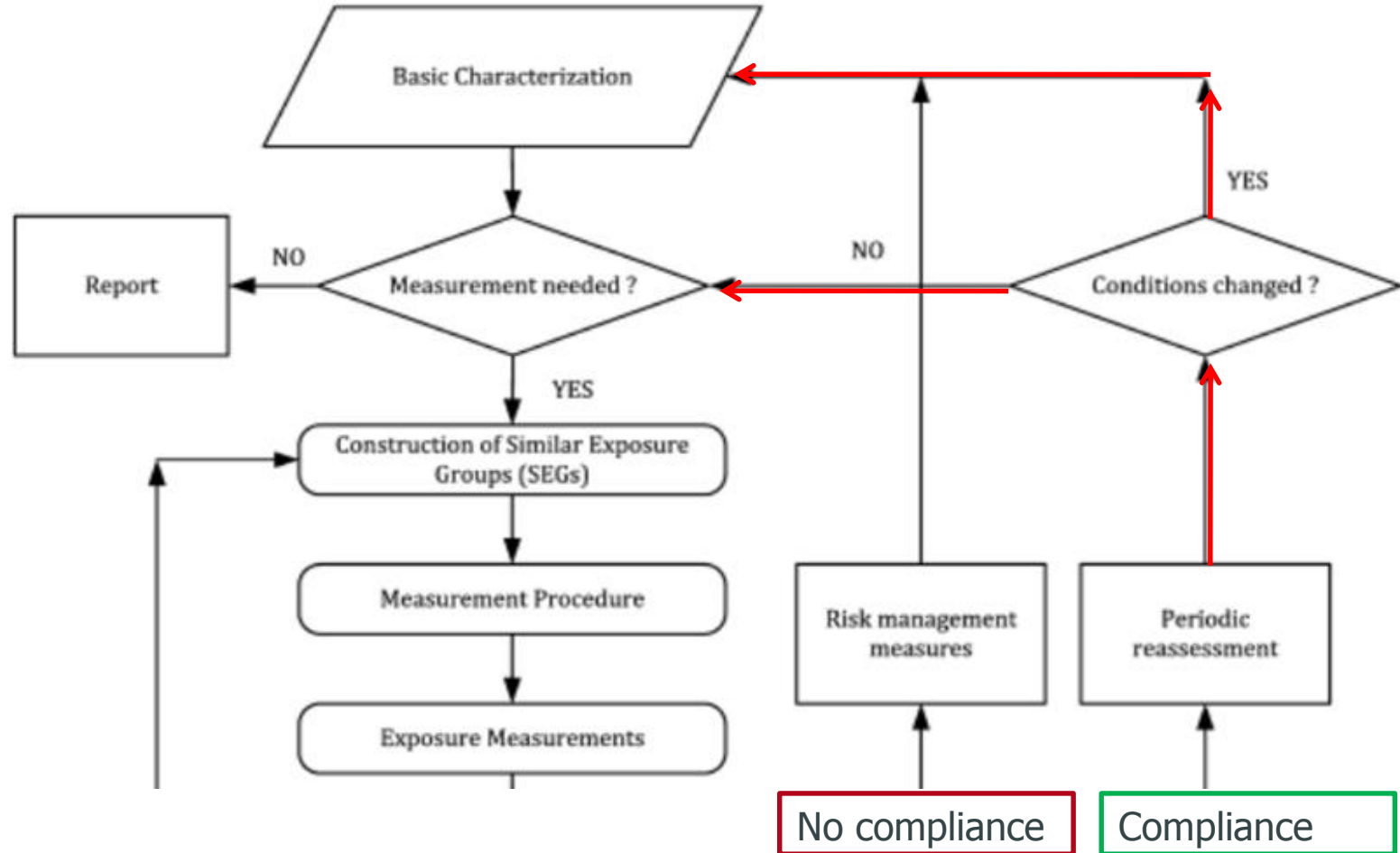


No compliance

Compliance

Delivering on our Promises

Kept flexible: Not to return to Basic Characterization at all times

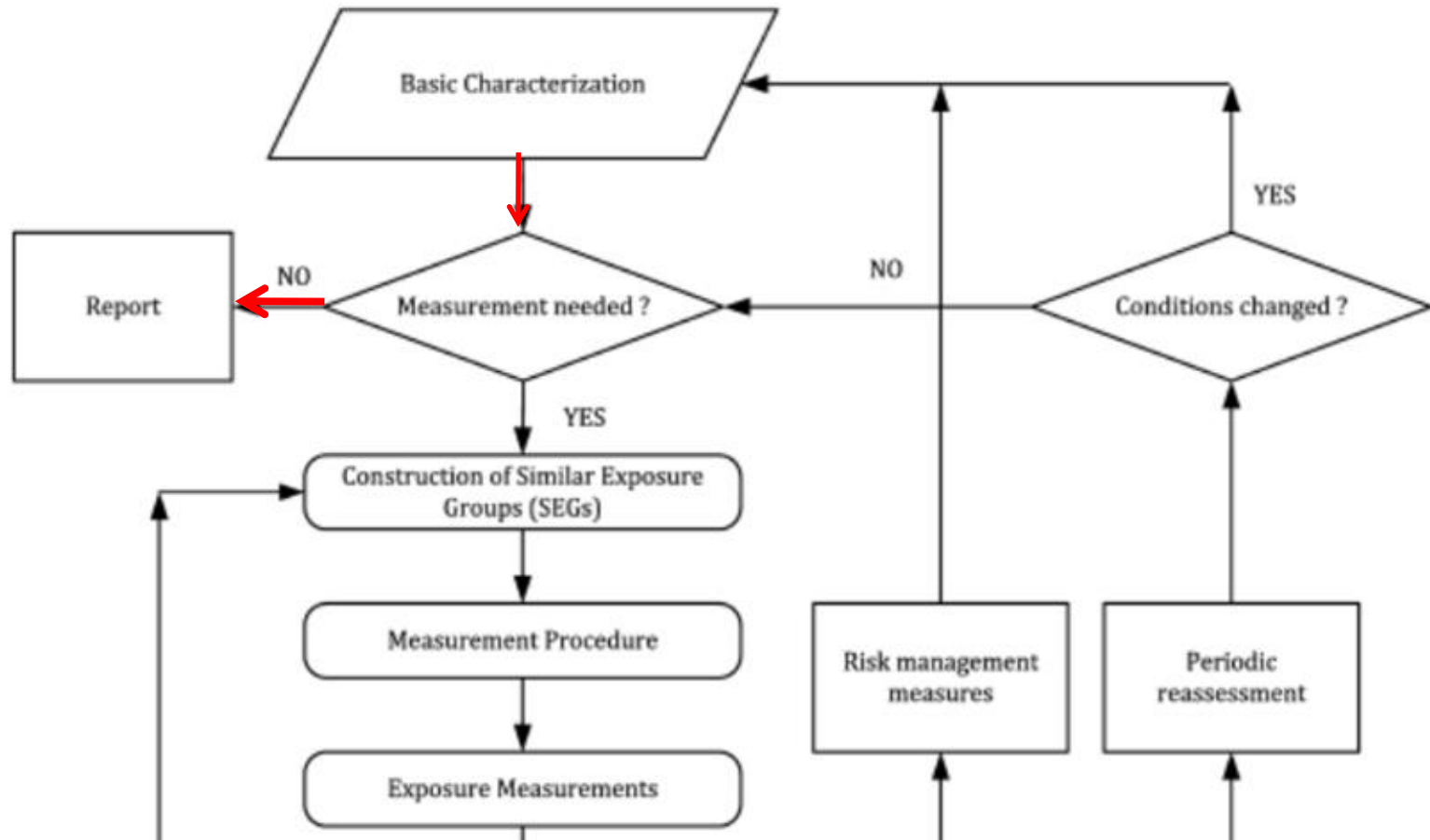


No compliance

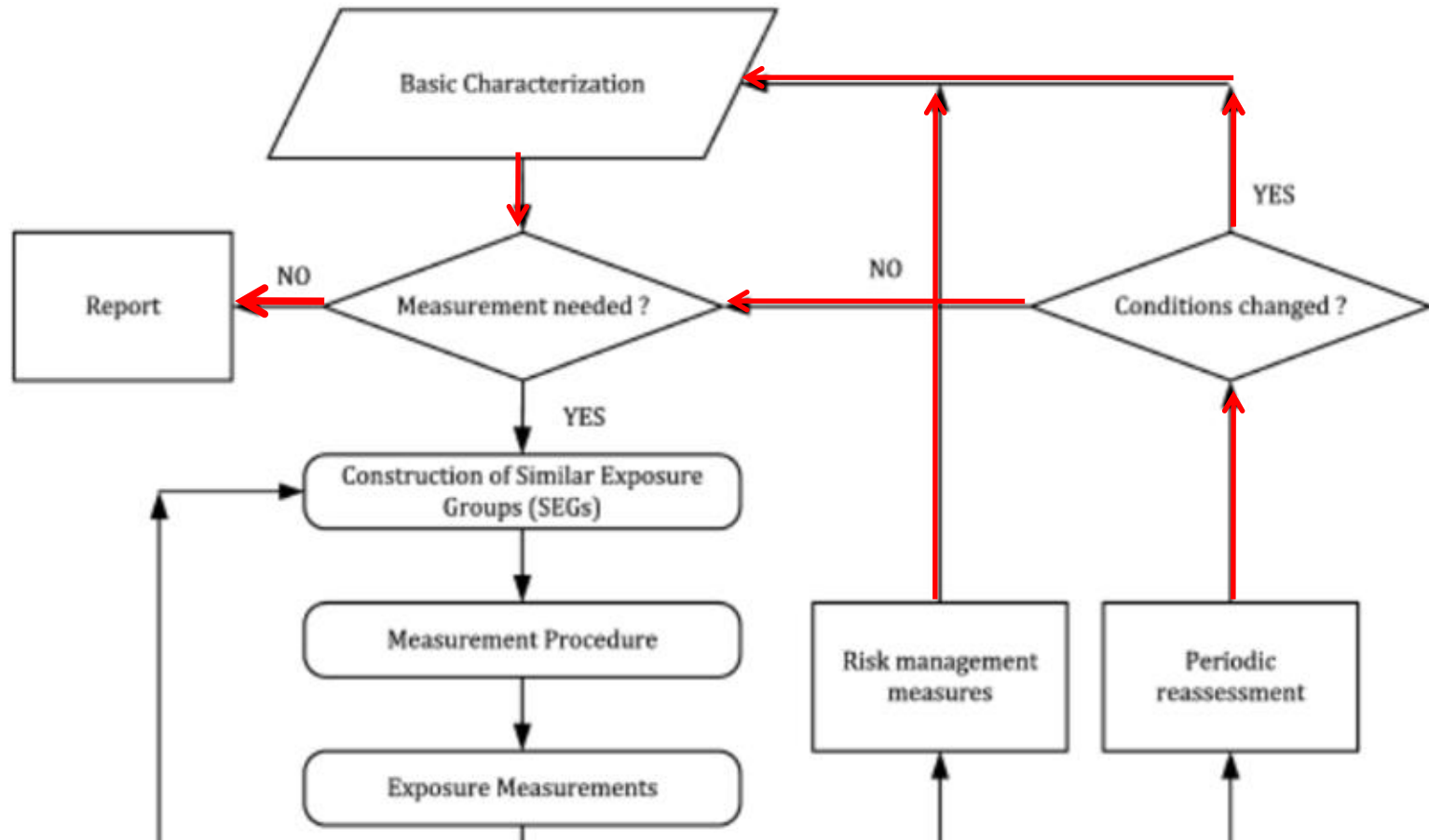
Compliance

Delivering on our Promises

Kept Cost-Effective: Show compliance without measurements!



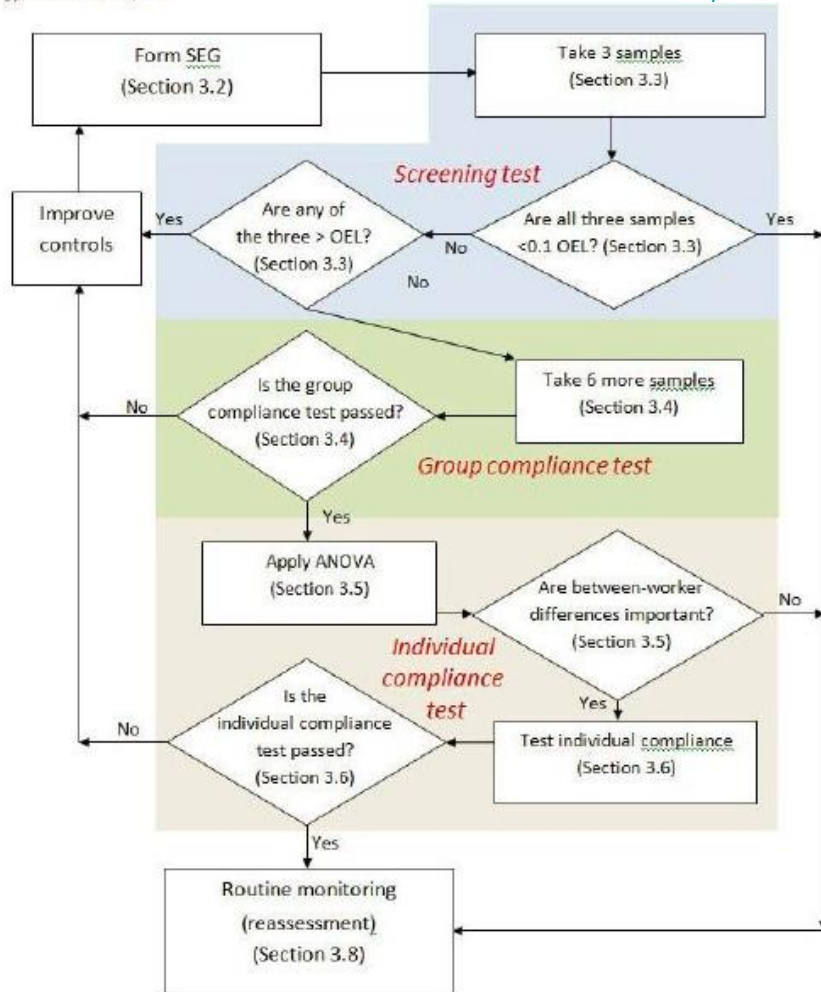
Kept Cost-Effective: Opportunity to stop monitoring at all times



No compliance

Compliance

Delivering on our promises



Key Differences:

- Reduced scope
 - Starts with creation of SEG
- More comprehensive tests
 - Screening test
 - Group compliance test
 - **Individual Compliance test**
- Closed loop
 - No opportunity to stop monitoring

Delivering on our Promises

Key Difference: Risk management vs. compliance testing

Management and Exposure Control Categories		
	SEG Exposure Control Category**	Applicable Management/ Controls
	0 (<1% of OEL)	no action
	1 (<10% of OEL)	procedures and training, general hazard communication
	2 (10-50% of OEL)	+ chemical specific hazard communication, periodic exposure monitoring
	3 (50-100% of OEL)	+ required exposure monitoring, workplace inspections to verify work practice controls, medical surveillance, biological monitoring
	4+ (>100% of OEL, Multiples of OEL; e.g., based on respirator APFs)	+ implement hierarchy of controls, monitoring to validate respirator protection factor selection
**Upper Tail Statistic decision = 90th, 95th, 99th percentile		

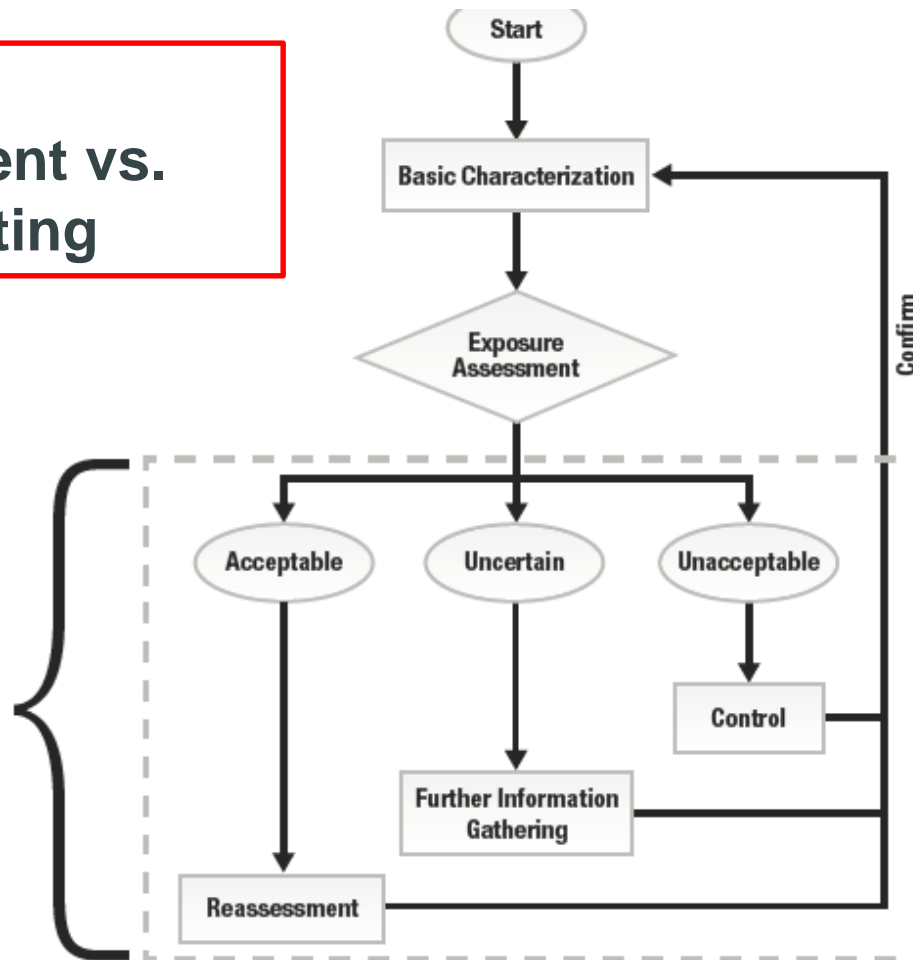


Figure 1.2 – A Strategy for assessing and managing occupational exposures.

Conclusions on New Flow Chart of prEN 689

- **Key features of the New Flow Chart**

- Simple
 - Compared to previous graph
- To the point
 - No risk assessment loop
- Flexible
 - Back to Basic Characterization
- Cost-effective
 - Alternatives to compliance measurements offered
 - Ample Opportunities to stop

- **Comparison with other Flow Charts**

- BOHS-NVvA
 - Individual Compliance test
- AIHA
 - Risk management vs. Compliance testing

 **Thank You for your attention**



Delivering on our Promises